

Category 6 UTP Cabling System Solid Cable

Part No: 9365EXG

[View Online](#)



STANDARD: UL1581, UL444, ANSI/EIA/TIA 568B.2-1, EN50173, EN50167

Features and Benefits

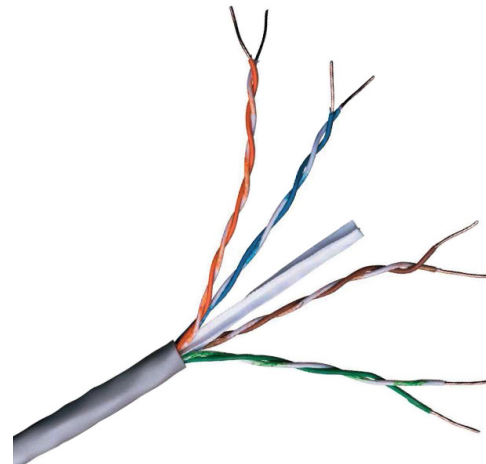
- High Speed Horizontal Cabling
- 100 Mbps TPDDI
- 1000 Base T
- 622 Mbps ATM
- IEEE802.3/IEEE802.5
- DIGITAL VIDEO etc.

Construction

- **Type:** Horizontal Cable
- **No. of Pairs:** 4
- **Conductor:** 23AWG (0.575 mm)
- **Insulation Thickness:** 0.25 mm
- **Outer Diameter:** 6.3 mm
- **Jacket:** PE (Black)
- **Insulation:** HDPE

Specifications

- **Conductor Resistance:** 93.8 Ω /km 20°C Max
- **Mutual Capacitance:** 5.6 nF/100m Max
- **Resistance Unbalance:** 5% Max
- **Capacitance Unbalance:** 330 pF/100m Max
- **Impedance:** F \leq 200:100 \pm 15 Ω , F $>$ 200:100 \pm 22 Ω
- **Operating Temperature Range:** -20 to +60°C
- **Installation Temperature Range:** 0 to +50°C



Ordering Information

- **Part No:** 9365EXG
- **Product Description:** VIDEK 4 Pair Solid UTP Cat6 External Grade Cable Black 305Mtr Reel

Category 6 UTP Cabling System Solid Cable

Part No: 9365EXG

[View Online](#)



Frequency MHz	Attenuation Max (dB/100m)	Pr-Pr NEXT Min (dB \geq 100m)	PS NEXT Min (dB \geq 100m)	ACR Min dB	Pr-Pr FEXT Min dB/100m	PS ELFEXT Min dB/100m
0.772	1.8	76.0	74.0	74.2	70.0	67.0
1	2.0	74.3	72.3	72.3	67.8	64.8
4	3.8	65.3	63.3	61.5	55.7	52.7
8	5.4	60.8	58.8	55.4	49.7	46.7
10	6.0	59.3	57.3	53.3	47.8	44.8
16	7.7	56.3	54.3	48.6	43.7	40.7
20	8.6	54.8	52.8	46.2	41.7	38.7
25	9.6	53.3	51.3	43.7	39.8	36.8
32.25	10.8	51.9	49.9	41.1	37.9	34.9
62.5	15.7	47.4	45.4	31.7	31.8	28.8
100	20.2	44.3	42.3	24.1	27.8	24.8
200	29.8	39.8	37.8	10.0	21.7	18.7
250	33.8	38.3	36.3	4.6	19.8	16.8